

Philanthropic Giving and Strategic Grant Funding

Empowering Rural Communities: MMCLT and SCF in Action to support the Local Nature Recovery Strategy.

Mandy Thorn MBE DL

Shropshire Community Foundation



Objectives for Today!

- ▶ Demonstrate the importance of Middle Marches Community Land Trust (MMCLT) in the county
- ▶ Demonstrate how Shropshire Community Foundation may support and enable the work of MMCLT and the implementation of the Local Nature Recovery Strategy.
- ▶ And connect the roles of both organisations to the UNSDG 15: conserving land and biodiversity



The role of Community Foundations

- A worldwide philanthropic movement bringing together people and organisations that care with causes that matter
- **Shropshire Community Foundation** is relatively new
- **We generate and invest donations and endowments** to deliver grants and to benefit our communities through addressing specific challenges that are faced



**Shropshire
Community
Foundation**



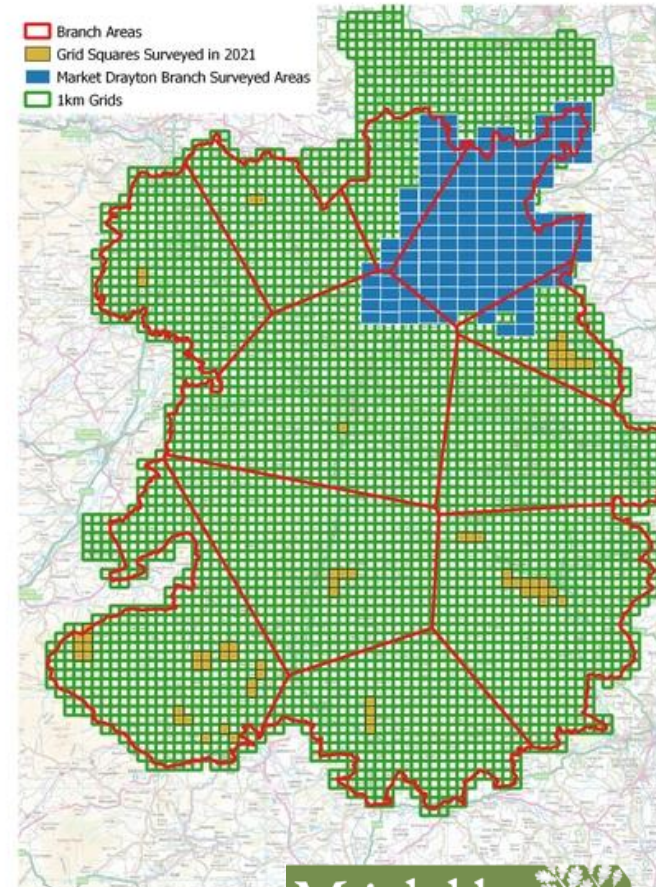
Middle Marches Community Land Trust

- ▶ Community led Trust working within Shropshire to
 - ▶ Acquire and manage land for Nature Recovery
 - ▶ Work with and support landowners, farmers and occupiers large and small
 - ▶ Work with organisations, communities and individuals
 - ▶ Provide advice and guidance and advocacy
 - ▶ Different to many other CLT - the focus is on nature recovery not social housing



Local Nature Recovery Strategy

- ▶ Each county in England is developing its Local Nature Recovery Strategy - here Shropshire Council is the lead authority and working very closely with Telford & Wrekin Council and Natural England
- ▶ Part of their work is to produce:
 - ▶ A local habitat map.
 - ▶ A written statement of biodiversity priorities.



Shropshire
Wildlife Trust

Ordnance Survey © Crown copyright. All rights reserved. Licence number LAN1001799

Middle
Marches
Community
Land Trust



Nature Recovery
Shropshire and
Telford & Wrekin

United Nations Sustainable Development

Goal 15

- ▶ UNSDG 15 is about protecting life on land for global sustainability
 - ▶ Protecting biodiversity
 - ▶ Preventing and reversing land degradation
 - ▶ Increasing sustainable land management practices



How Community Land Trusts could support UNSDG 15

- ▶ Preserve green spaces
- ▶ Promote sustainable practices in rural areas
- ▶ Develop community led conservation efforts
- ▶ Encourage the development of more Community Land Trusts in the County
- ▶ Integrate nature recovery into community owned social housing.



The Role of Shropshire Community Foundation in supporting MMCLT

- ▶ We are a not-for-profit place-based organisation working for the best interests of local communities across Shropshire - we are rooted in those communities and focused on empowering local organisations through strategic grant giving
- ▶ We can help develop and manage funds to support strategic projects that address biodiversity loss and land degradation
- ▶ We have strong networks across the County and can support with capacity building
- ▶ We can advocate for policy change. We are independent and as we don't deliver services we are not conflicted



The Challenges faced by rural Community Land Trusts and how Shropshire CF can help

CHALLENGES

- ▶ Limited funds and resources
- ▶ Particularly for sparsely populated rural areas
- ▶ Resistance to land use changes
- ▶ Engaging with local communities
- ▶ Regulatory hurdles

OPPORTUNITIES OF COLLABORATION

- ▶ Sharing resources for long term sustainability
- ▶ Strengthened advocacy and impact
- ▶ Cross sector partnerships
- ▶ Community education and empowerment
- ▶ Leveraging public private partnerships
- ▶ Developing innovative financial models

695466102

Next steps??

- ▶ Nurture and enable the role of Community Land Trusts - we have MMCLT but should we enable more to be formed?
- ▶ Seek to prioritise land-based projects within Shropshire, Telford and Wrekin that are aligned with UNSDG 15 and the Local Nature Recovery Strategy (LNRS)
- ▶ Support communities who wish to develop their own sustainable land practices - particularly town and parish councils
- ▶ Advocate for more central government support for CLTs and their work for biodiversity gain and sustainable land practices
- ▶ Champion the development of community led and owned social housing with integrated nature recovery initiatives.